

Exploring indicators of greenspace 'quality' in relation to self-reported general health

Paul Brindley¹; Ross Cameron¹; Ebru Ersoy²;
Anna Jorgensen¹ and Ravi Maheswaran³

1: Department of Landscape, University of Sheffield, UK

2: Department of Landscape Architecture, Adnan Menderes University, Turkey

3: Public Health GIS Unit, School of Health and Related Research, University of Sheffield, UK



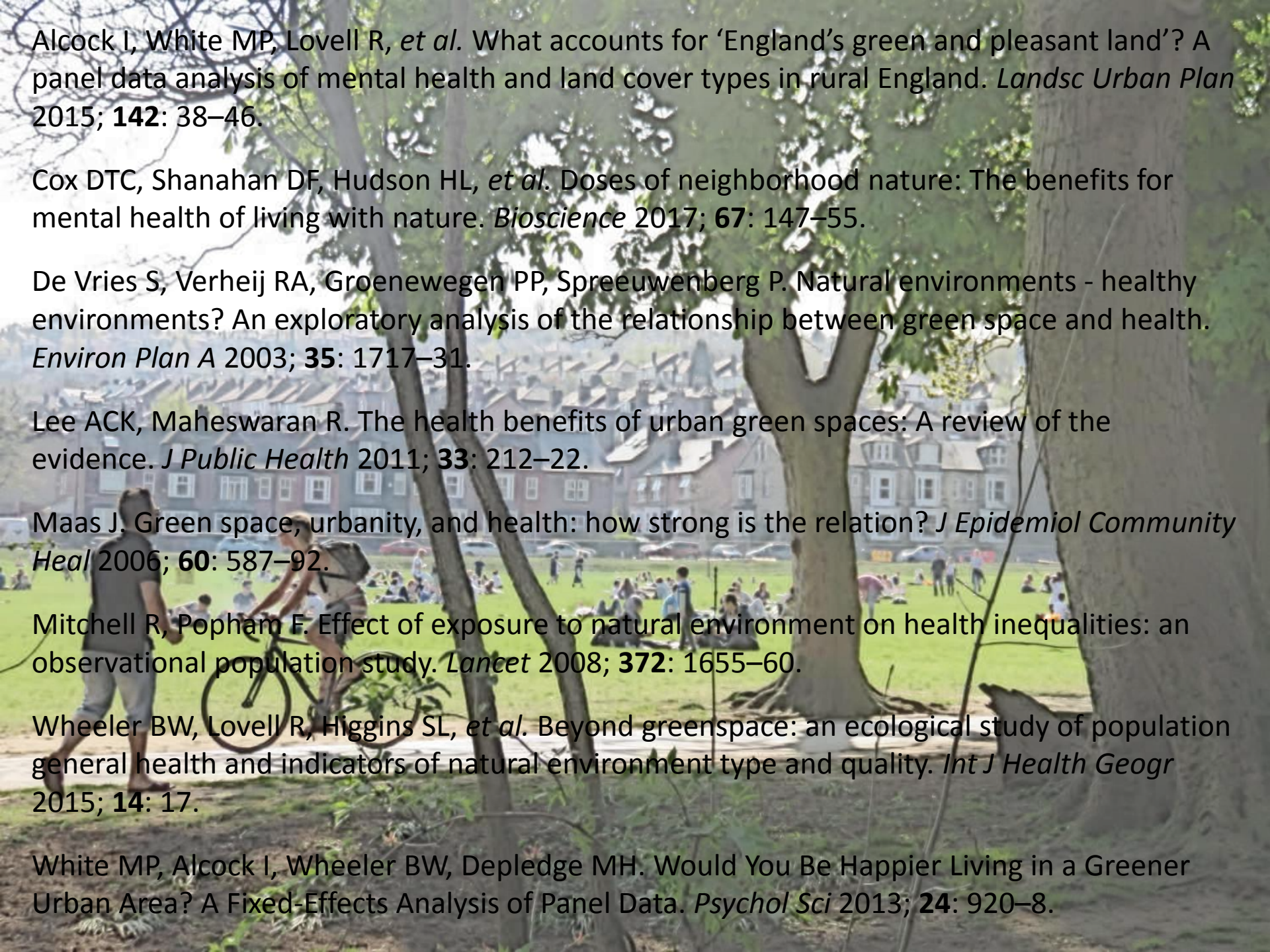
IWUN

Improving wellbeing through urban nature

<http://iwun.uk>



VALUING NATURE



Alcock I, White MP, Lovell R, *et al.* What accounts for 'England's green and pleasant land'? A panel data analysis of mental health and land cover types in rural England. *Landsc Urban Plan* 2015; **142**: 38–46.

Cox DTC, Shanahan DF, Hudson HL, *et al.* Doses of neighborhood nature: The benefits for mental health of living with nature. *Bioscience* 2017; **67**: 147–55.

De Vries S, Verheij RA, Groenewegen PP, Spreeuwenberg P. Natural environments - healthy environments? An exploratory analysis of the relationship between green space and health. *Environ Plan A* 2003; **35**: 1717–31.

Lee ACK, Maheswaran R. The health benefits of urban green spaces: A review of the evidence. *J Public Health* 2011; **33**: 212–22.

Maas J. Green space, urbanity, and health: how strong is the relation? *J Epidemiol Community Heal* 2006; **60**: 587–92.

Mitchell R, Popham F. Effect of exposure to natural environment on health inequalities: an observational population study. *Lancet* 2008; **372**: 1655–60.

Wheeler BW, Lovell R, Higgins SL, *et al.* Beyond greenspace: an ecological study of population general health and indicators of natural environment type and quality. *Int J Health Geogr* 2015; **14**: 17.

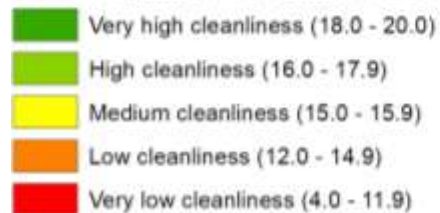
White MP, Alcock I, Wheeler BW, Depledge MH. Would You Be Happier Living in a Greener Urban Area? A Fixed-Effects Analysis of Panel Data. *Psychol Sci* 2013; **24**: 920–8.

Council – cleanliness score

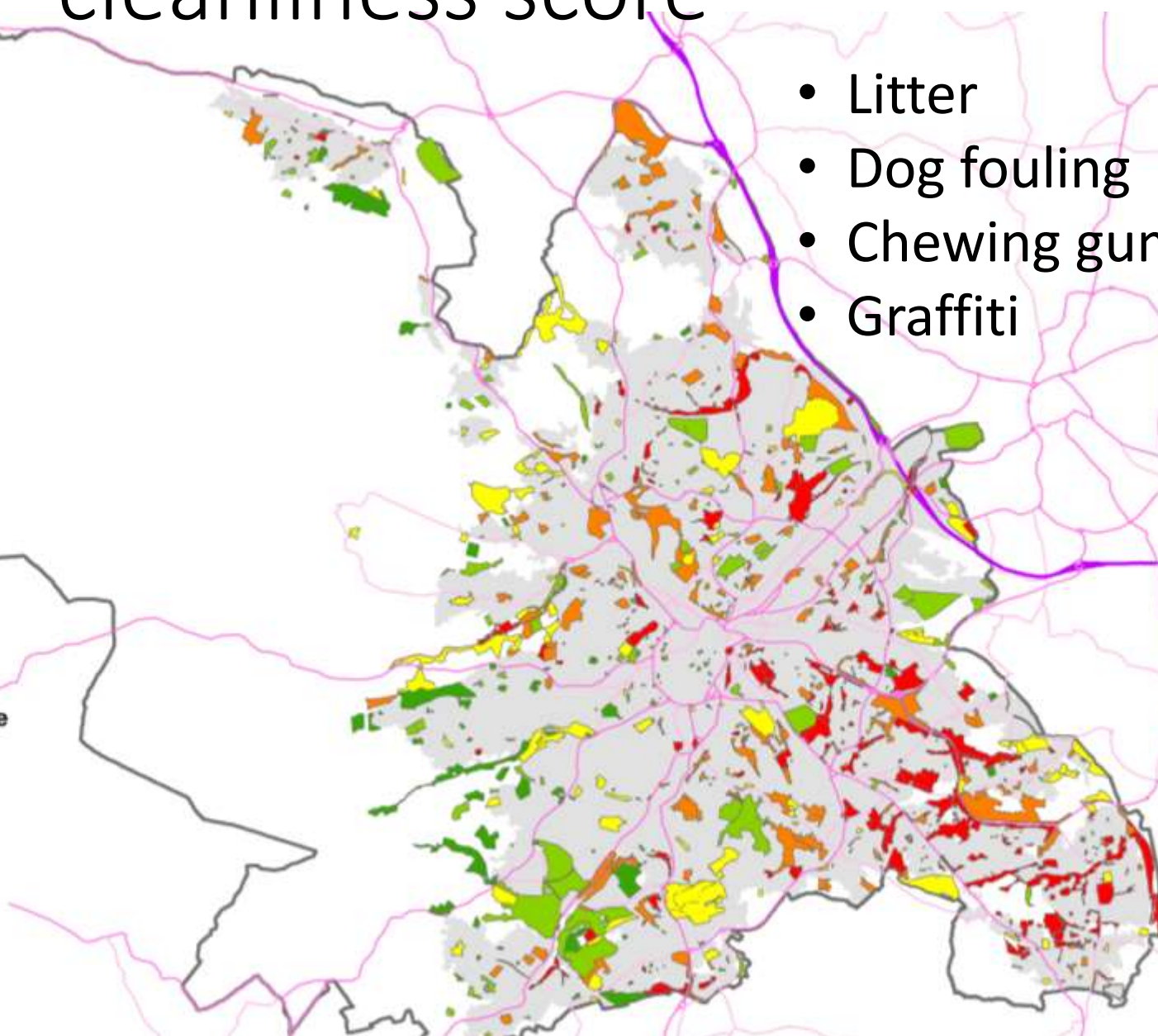
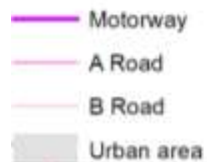
- Litter
- Dog fouling
- Chewing gum
- Graffiti

n = 850

PPG17 quality - cleanliness score



Road network



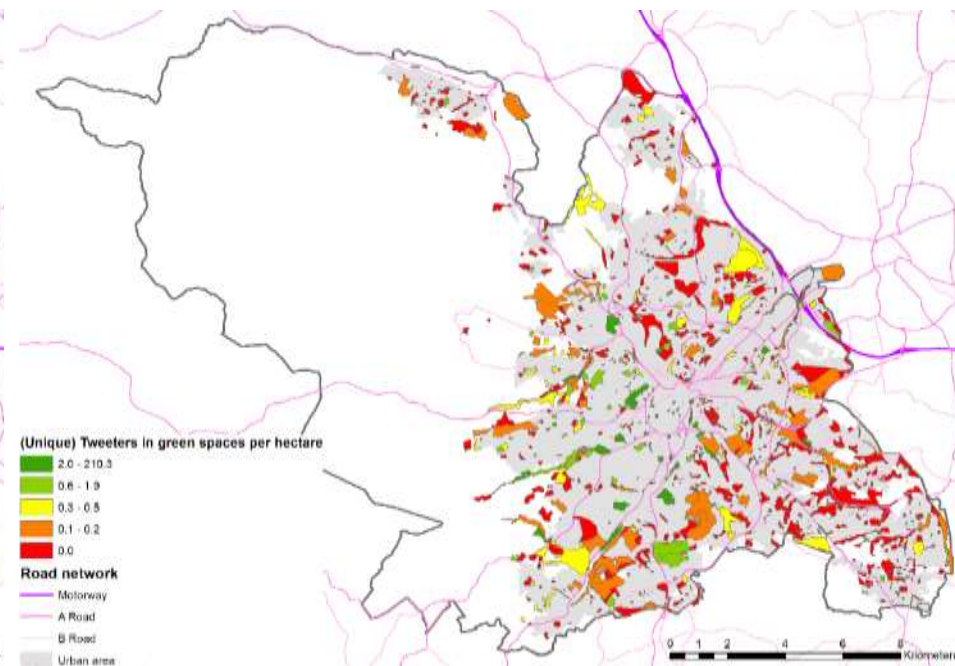
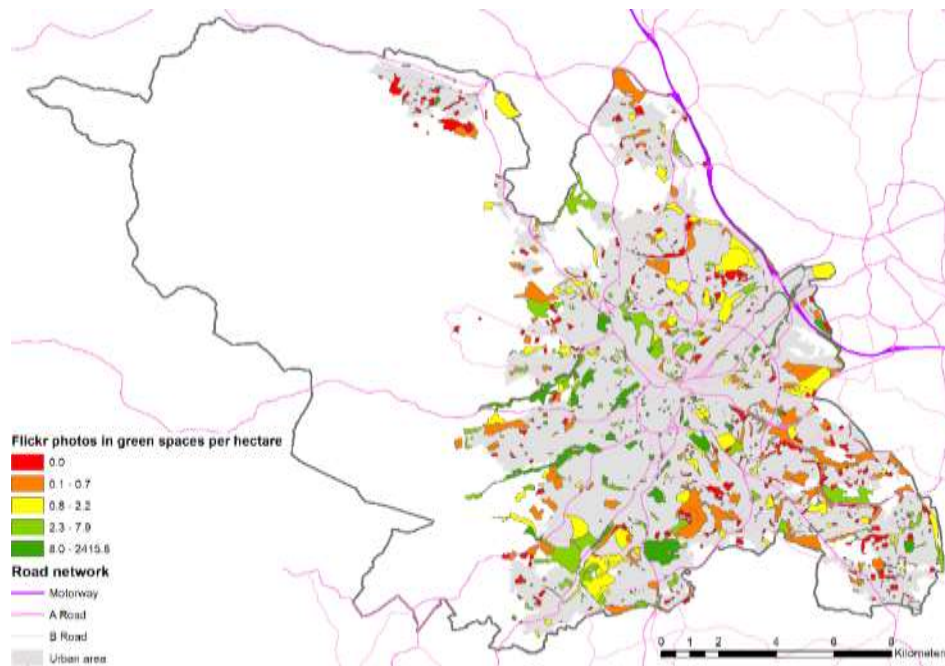
Alternative measures of quality



Flickr photos in greenspaces: 29,660
Average: 31 photos in each greenspace



1 yrs Tweets in greenspaces: 4,632
(Unique) Tweeters: 2,165
Average: 2.3 tweeters in each greenspace



spring winter leaves plants leaf
fountain designed december yellow tree
species using beauty crocus bird
flower sky flora squirrels white situated hot
wildlife bloom plant music nuts sunshine rose
pink day snow greysquirrel just July blossom

sheffield grey Art
more robin
purple britain
portrait black

trees red grass today one nut statue Bear
opened sun film blue bee most people acres
took pit gb notable water squirrel green
southyorkshire some outdoors
light pigeon topupthetea unitedkingdom

nature beautiful park flowers summer
unitedkingdom yorkshire england
november autumn time

landscape yob
abandoned music insect
sun path evidence wooden
taken image mugging crime background
flowers spring detritus wood before car rubbish Church here
festival summer traces day started
burglary england
yellow csi go morning
snow some
building autumn tower April
sign beer field Snowy leaf Tent fly event Winter grass
uk yorkshire Dog bush Street outdoors green love full
Colour city sky card trees viewed things tree
gb night scoopt robbery Head southyorkshire
Hat criminals flower Crowds early nature theft
purse significance police people burglary Small

southyorkshire yorkshire
Recreation england
clouds around Saturday through sledging
jump fence unitedkingdom march
Ground van taken light blue
sunrise june back sunset day little goal
road Service april boys time explore one way morning
first english hunt large people two more nature night
Looking clones
bit Just Valley
some sky winter
city see car
sunsets over
work park jan tonight south mist done ambulance
walk great summer view nice
try home sun playground dec paramedic
bike yesterday snow went picture
grass january motorbike cream fog pictures
children feb

sheffield

unitedkingdom year
afternoon scenery summer spring
highlandflying one snow frozen grass water
Pigs colour cliffhanger animals
transport Fling sycamore Highland film districts
animal farm animalfarm frost breeds lake day
rain outdoor over squirrel action festival square
sunset woodland landscape today color ducks
sun duck night eye using walk blue frame cafe sky
uk old pond trees winter
light cold rare cow fowl
ice red building area dusk
saw public birds Bark
tree photo bird england sheep Donkey
South parkland nature cattle
october parkrun white protect

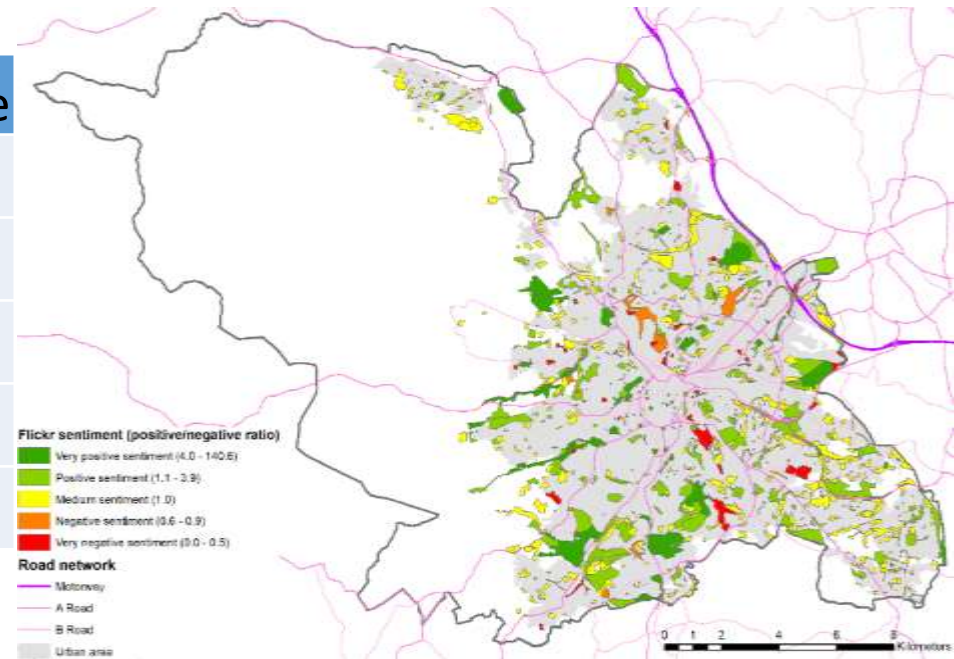
park

sheffield

Flickr sentiment analysis

- *VADER (Valence Aware Dictionary and sEntiment Reasoner) Sentiment Analysis (version 2.5)*
- *a lexicon and rule-based sentiment analysis tool that is specifically attuned to sentiments expressed in social media*

Sentence:	negative	neutral	positive
i love nature	0.00	0.19	0.81
i don't love nature	0.63	0.37	0.00
i love nature!	0.00	0.18	0.82
i LOVE nature!	0.00	0.16	0.84
I love nature! :)	0.00	0.12	0.88

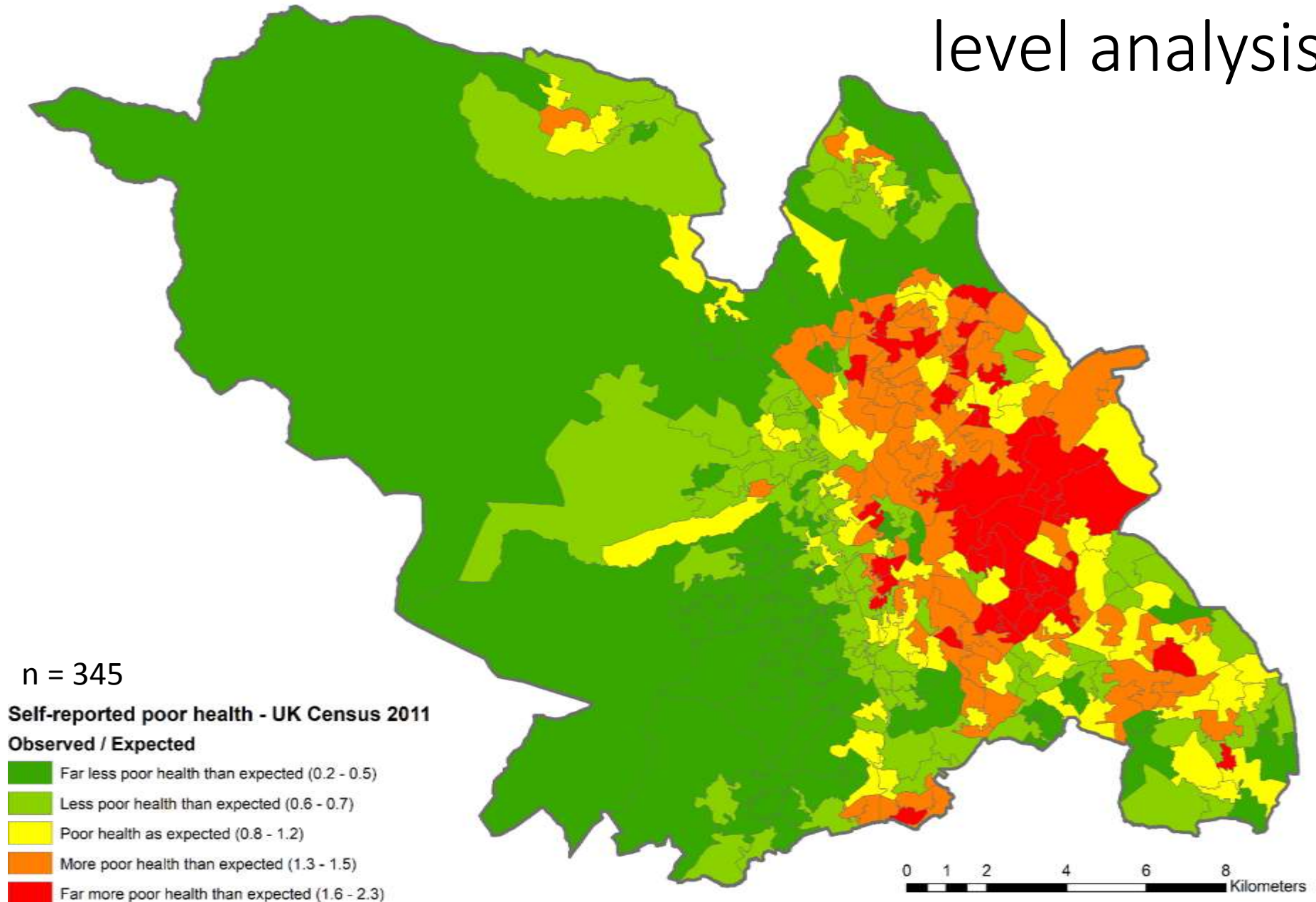


Hutto, C.J. and Gilbert, E.E. (2014). VADER: A Parsimonious Rule-based Model for Sentiment Analysis of Social Media Text. Eighth International Conference on Weblogs and Social Media (ICWSM-14). Ann Arbor, MI, June 2014.

1. Greenspace level analysis

n = 850	Council - cleanliness score	Total number of Flickr photos	Flickr photos per hectare	Flickr sentiment ($\sum\text{pos} / \sum\text{neg}$)	Total (unique) twitter users	Twitter users per hectare
Council - cleanliness score	-	0.06	0.08	0.03	0.08	0.08
Total number of Flickr photos		-	0.96	0.45	0.51	0.47
Flickr photos per hectare			-	0.39	0.44	0.42
Flickr sentiment ($\sum\text{pos} / \sum\text{neg}$)				-	0.32	0.29
Total (unique) twitter users					-	0.99
Twitter users per hectare						-

2. Relationship with health: Census area level analysis



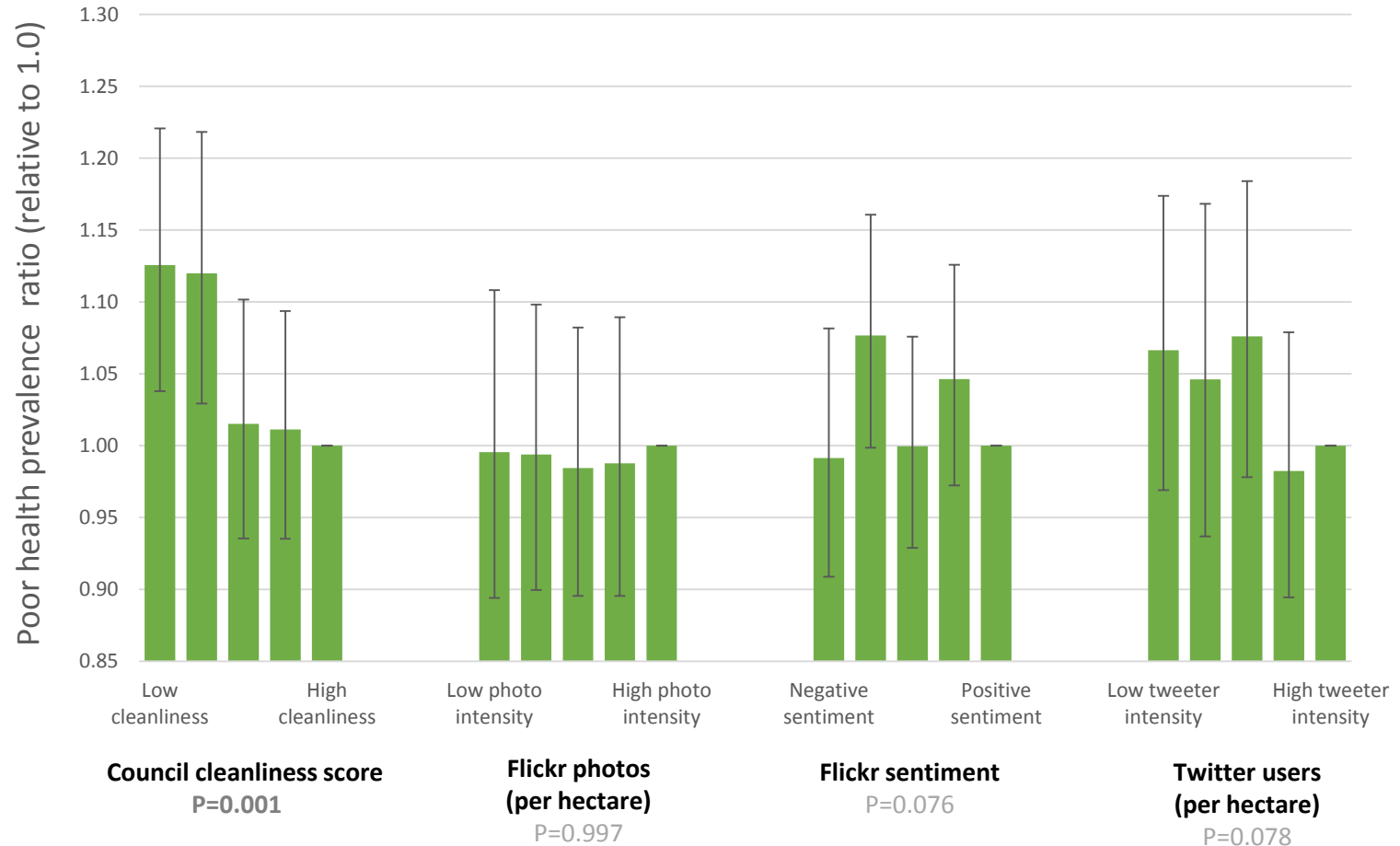
Negative binomial regression:

Dependent variable: Standardised poor health

Offset: $\ln(\text{expected poor health})$

Confounders:

- Income deprivation
- Antisocial crimes
- Total green space
- Average garden size



Does quality matter?

Confounders:

Variable:	Quintile:	PR	95% CI
Income deprivation	1 (most deprived)	2.86	2.54, 3.21
	2	2.34	2.09, 2.62
	3	1.64	1.49, 1.82
	4	1.23	1.12, 1.34
	5 (least deprived)	1	.
Antisocial crimes	1 (most crime)	1.05	0.94, 1.17
	2	1.06	0.96, 1.18
	3	1.07	0.97, 1.18
	4	1.10	1.01, 1.20
	5 (least crime)	1	.
Total greenspace	1 (least green space)	1.09	0.99, 1.20
	2	1.04	0.97, 1.12
	3	1.02	0.95, 1.09
	4	1.00	0.93, 1.06
	5 (most green space)	1	.
Average garden size	1 (smallest gardens)	1.22	1.11, 1.34
	2	1.11	1.02, 1.21
	3	1.08	1.00, 1.17
	4	1.08	1.00, 1.16
	5 (largest gardens)	1	.

Quality measures:

Variable:	Quintile:	PR	95% CI
Council cleanliness score	1 (least clean)	1.13	1.04, 1.22
	2	1.12	1.03, 1.22
	3	1.02	0.94, 1.10
	4	1.01	0.94, 1.09
	5 (most clean)	1	.
Flickr photos per hectare	1 (low number of photos)	1.00	0.89, 1.11
	2	0.99	0.90, 1.10
	3	0.98	0.90, 1.08
	4	0.99	0.90, 1.09
	5 (high number of photos)	1	.
Flickr sentiment	1 (negative sentiment)	0.99	0.91, 1.08
	2	1.08	1.00, 1.16
	3	1.00	0.93, 1.08
	4	1.05	0.97, 1.13
	5 (positive sentiment)	1	.
Number of twitter users per hectare	1 (low number of tweeters)	1.07	0.97, 1.17
	2	1.05	0.94, 1.17
	3	1.08	0.98, 1.18
	4	0.98	0.89, 1.08
	5 (high number of tweeters)	1	.

Conclusions

- Association found between greenspace cleanliness and self-reported poor health
- Social media derived measures of 'quality' were not similar to survey data derived from Sheffield City Council
- 'Quality' measures derived from social media were poorly related to self-reported poor health

Exploring indicators of greenspace 'quality' in relation to self-reported general health

Paul Brindley¹; Ross Cameron¹; Ebru Ersoy²;
Anna Jorgensen¹ and Ravi Maheswaran³

1: Department of Landscape, University of Sheffield, UK

2: Department of Landscape Architecture, Adnan Menderes University, Turkey

3: Public Health GIS Unit, School of Health and Related Research, University of Sheffield, UK



IWUN

Improving wellbeing through urban nature

<http://iwun.uk>



VALUING NATURE