

Strathard - a landscape to live work and play

A collaborative initiative to improve
land, forest and water management

Lessons learnt



An Ecosystems Approach

Using an ecosystems approach to promote improved decision making and to deliver wider benefits

- Involving people in decisions
- Understanding how nature works
- The benefits nature provides – valuing nature's services



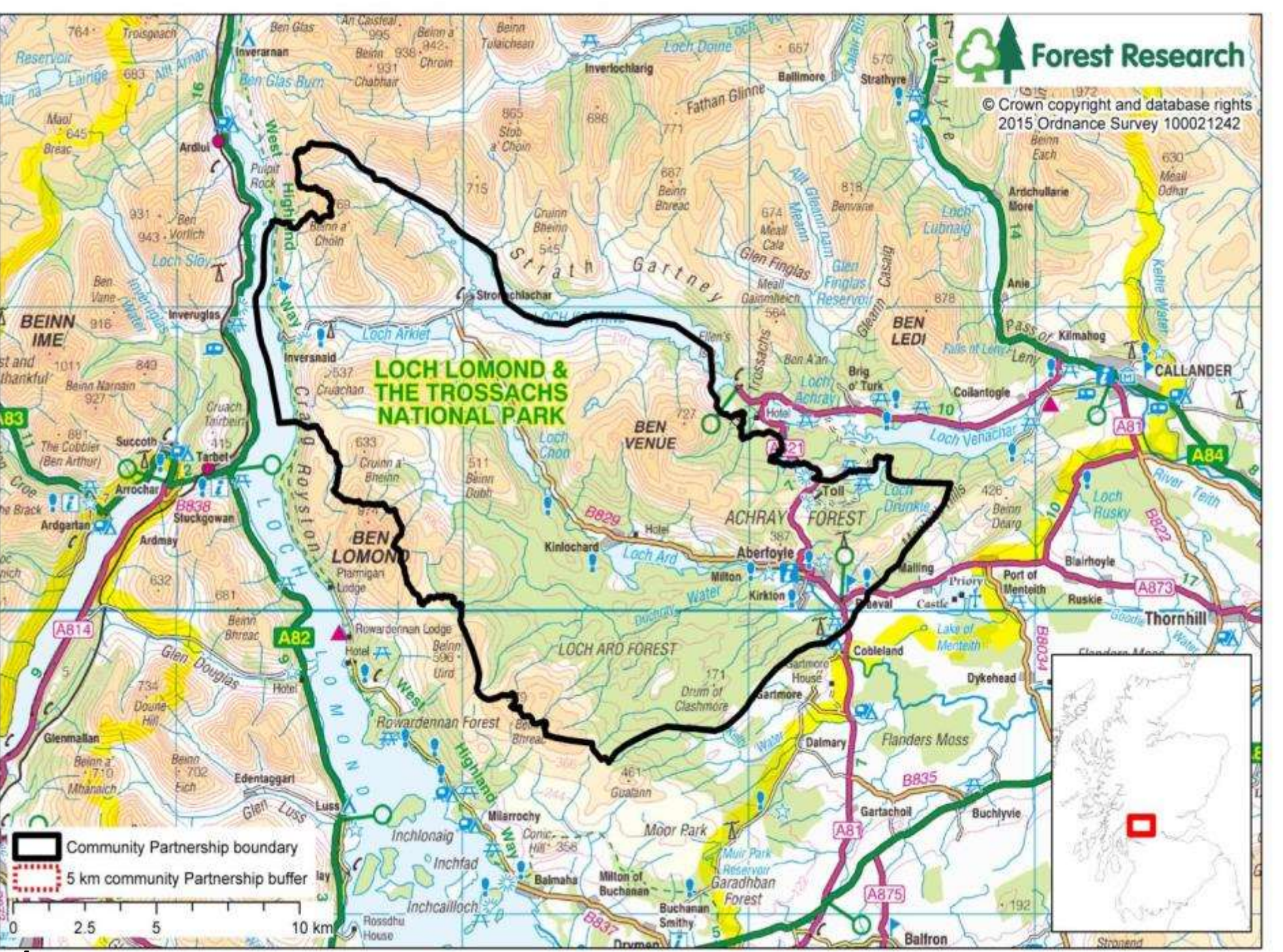
Ecosystems approach – sticking points


1. **Institutional**: short timescales & funding criteria
2. **Cognitive**: silo & priority focussed thinking
3. **Political** : pre-existing power relations



Waylen, K. A., K. L. Blackstock, and K. L. Holstead. 2015. How does legacy create sticking points for environmental management? Insights from challenges to implementation of the ecosystem approach. *Ecology and Society* 20(2): 21.

**LOCH LOMOND &
THE TROSSACHS
NATIONAL PARK**






 Community Partnership boundary

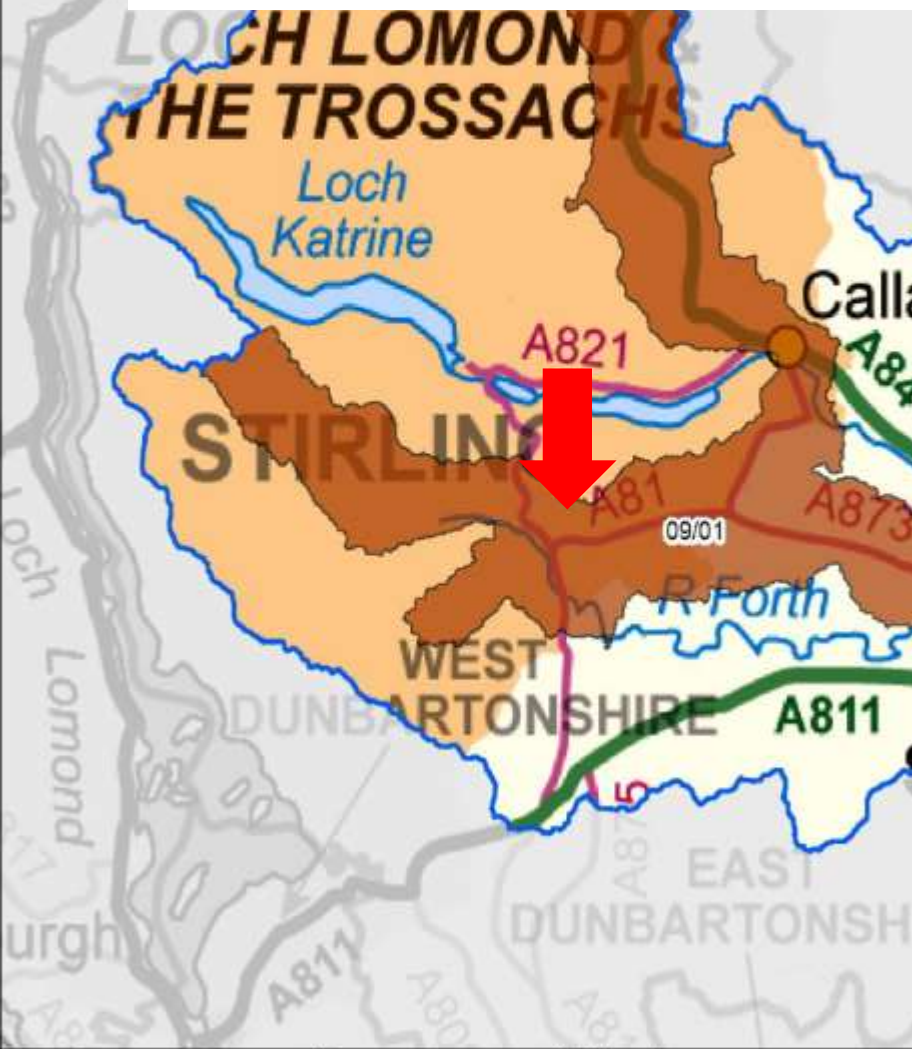
 5 km community Partnership buffer



Legend

-  LPD boundary
-  River Forth Catchment
-  Potentially Vulnerable Area

Driver: flooding issues at Aberfoyle
Forth Flood risk Management Strategy – LA's
to consider natural flood management.



0 5 10 20 Kilometers

Produced 2014. Some features of this map are based on data

Drivers for change:



2020 Challenge for Scotland's Biodiversity

Wild Park Plan

Improve condition of designated sites (SSSI, SAC's)

Land Use Strategy – promote use of an ecosystems approach, building on regional pilots



Forest Management Plans - multi-objective forestry

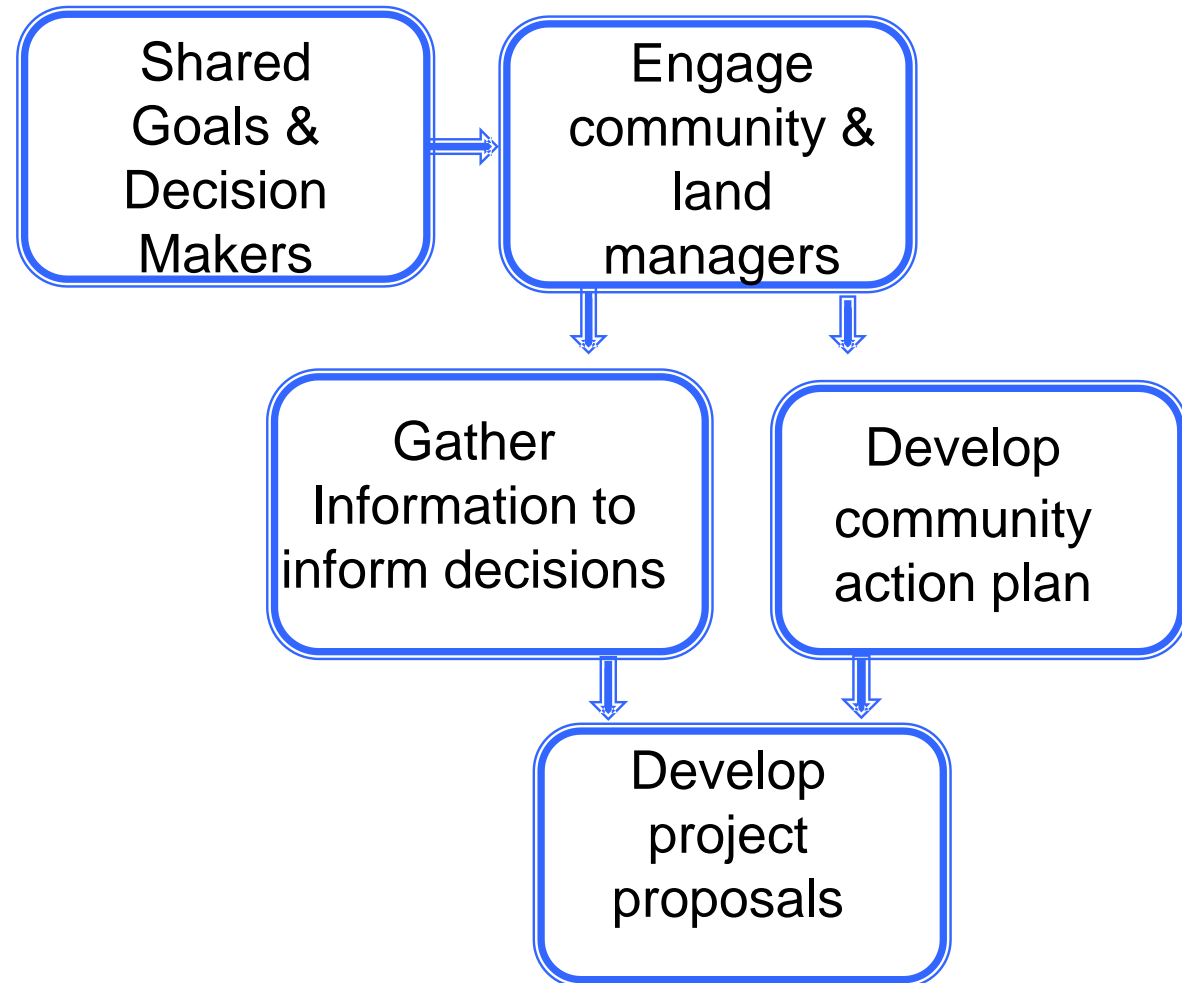
New Community Action Plan



Water Framework Directive – good ecological status and best practice

Tourism / park plan

Approach used in Strathard



Good - One team approach



- One agency agrees to lead & coordinate
- Training & sharing skills knowledge
- Shared learning
- Joint presentations
- Pooled funding
- Specialists from different agencies

Learning points

1. Make sure representative of team delivering work is on the steering group
2. New staff joining receive ecosystems approach training

Sticking points still to overcome:

- Short timescales
- Funding criteria

Good – start by listening when engaging local people

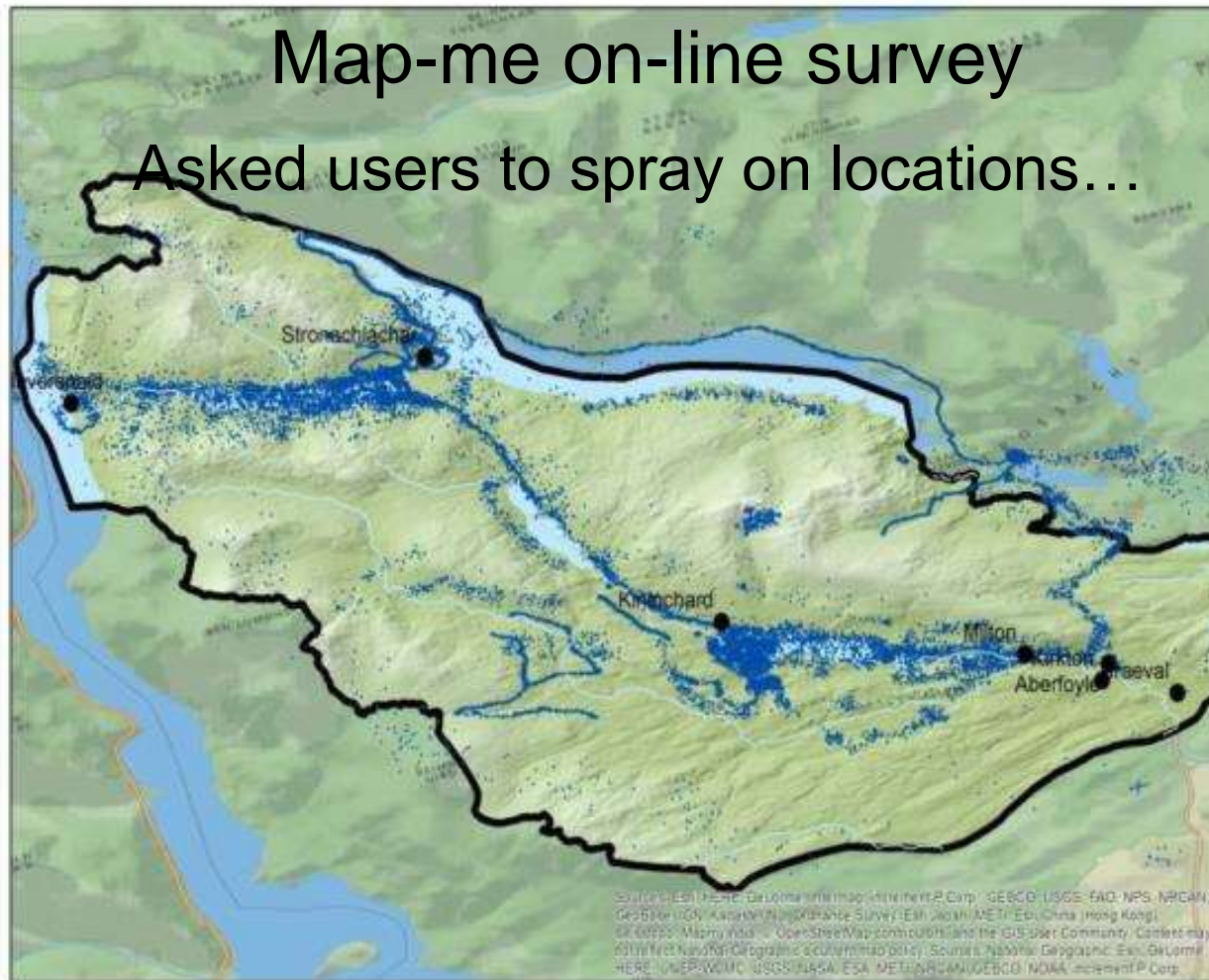


Calling all residents, busi
& landowners in Aberfoyle
Stronachlachar & In

Strathard: a landscape to live, w
collaborative initiative giving you an o
how the land, forest and water within 5

Drop into the community launch ev
Community films premiere, interactive wo
Everyone welcome

Community La
Sat 27 Feb 10
Kinlochard



Map-me on-line survey

Asked users to spray on locations...



Strathard

Strathard' Workshop 28 Sep 2016

Good- GIS Story Map uses images/maps to tell our story

input into the project. With your input we were able to answer the questions: what benefits/goods do you receive from the Strathard landscape? where do you value most for scenery/aesthetics? where would you like to see improvements? and more. Scroll down to find out more!

These include:

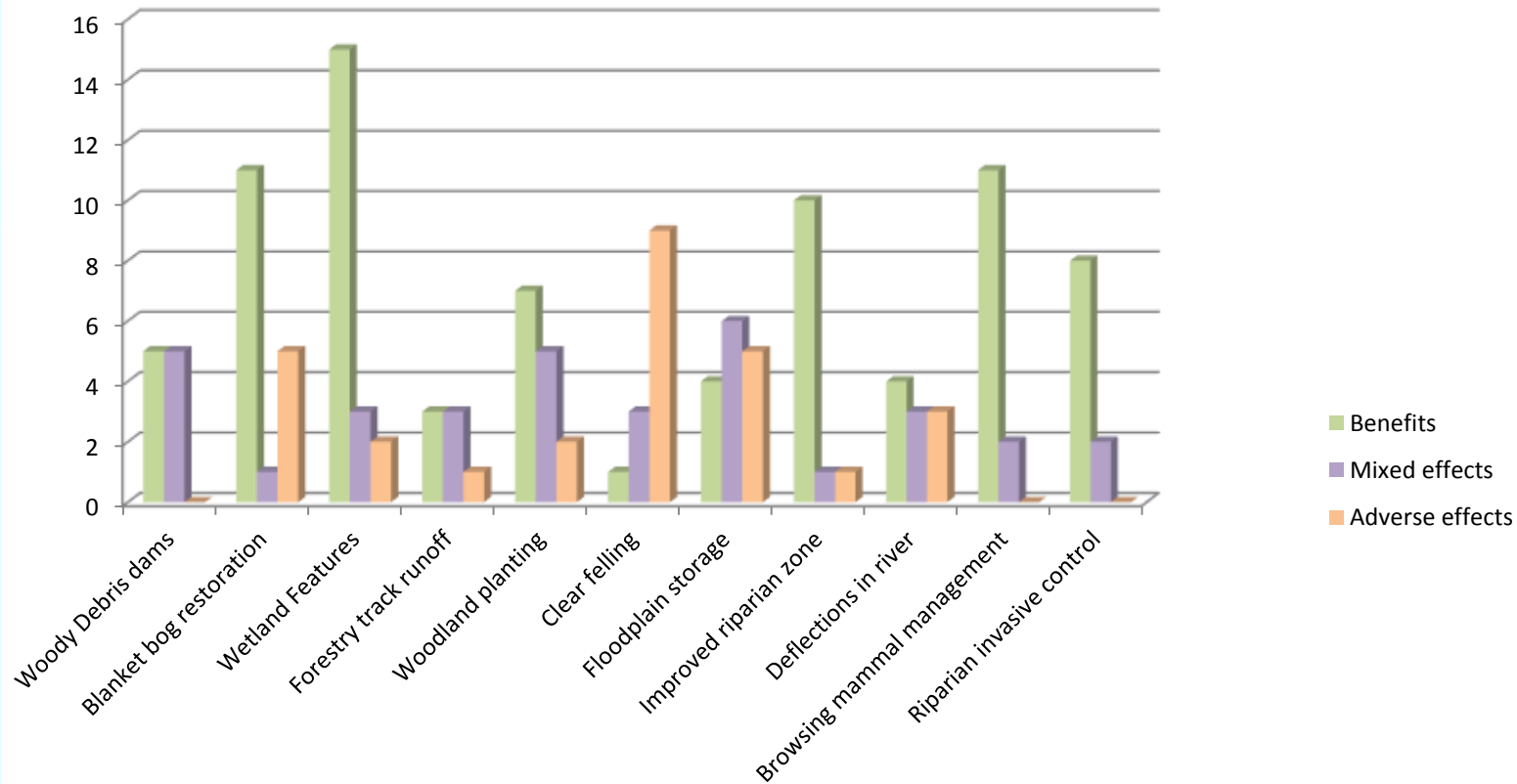
A Community Partnership website



Involving People

welcome to the strathard story map - please scroll down to continue

Tools to help decisions – taking account of multiple benefits



Ecosystem Services Checklists: Woody debris dams (1 of 11)

Provisioning services – products from the environment

Service (Level of service)	Potential effects	Project level effects	Opportunities, mitigation, recommendations
Timber from woodlands (Very High)	+/-		...with - select species to consider as part of
Wild plants and fungi for food from woodlands (Low)	+/-		...d fungi - part of
Fish for food from rivers (Low)	+		...eed to locate in ... this benefit
Hydropower (Medium)	+/-		...affect flows to hydro if put upstream. It could reduce flows during high flows - Further investigation needed at project level

What's the best option?

Regulating and maintaining services- natural processes that help manage the environment

Service (Level of Service)	Potential effects	Project level effects	Opportunities, mitigation, recommendations
Water quality improvements (Very High)	+		Potential to connect flood water to floodplain enabling sediments to settle out and possible bio remediation by micro-organisms.
Flood risk reduction in urban areas downstream (Very High)	+/-		Overall positive, as increase in hydraulic roughness helps slow the flow. However, if structure fails debris could be transported downstream – apply locational and design criteria to obtain benefit
Mass stabilisation and control of erosion by woodlands (High)	+/-		Duration of flooding needs to be considered. Longer term increase in water table could have a negative effect on rooting structure – consider as part of detailed location selection and land management plan.
Global climate regulation (Very High)	+		Increase in carbon store through accumulation of woody materials

Cultural services –



Service	Potential effects	Project level effects	Opportunities, mitigation, recommendations

Potential sites for LWD in the Duchray Water sub-catchments

Stream channel slope

-  <2 degrees
-  2 - 3
-  3 - 4

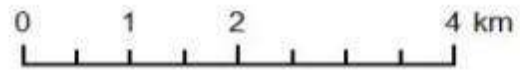
Suitability for large wood dams

-  Suitable
-  Unsuitable - too steep

Comer

Alt Glas

Where is the best place?



Crown Copyright and database right [2016]
Ordnance Survey licence number 100025498

Good – help people see how their ideas turn into action



Learning points

1. Building trust takes time – *“Many projects finish just as dialogue is beginning”*
2. Communities need support to deliver actions not just funding

Sticking points still to overcome:

- Pre-existing power relations
- Confusion between initiative & CAP

“It’s a good project I really like its approach”

Some final thoughts.... (May 2017)

“We will not go into another CAP without using this approach.”

Community Partnership Manager

“Seeing the agencies working together gave a different perspective and improved their credibility.”

“It would be good to use the learning from this project to refine the way we already engage with agencies, communities and internally”

Forest Planner

“Plenty of leg work completed, but action required or community confidence and interest will be lost”

“Ecosystem services are a useful vehicle to bring the agencies together in a structured way and agree a common and shared vision for this particular catchment”

“There is a need to deliver on the ground in phase 2 and resource this”